

# Map and Guide

70th Street S. & Jamaica Avenue S.



**DODGE**

NATURE CENTER

DodgeNatureCenter.org






651-455-4531

Info@DodgeNatureCenter.org

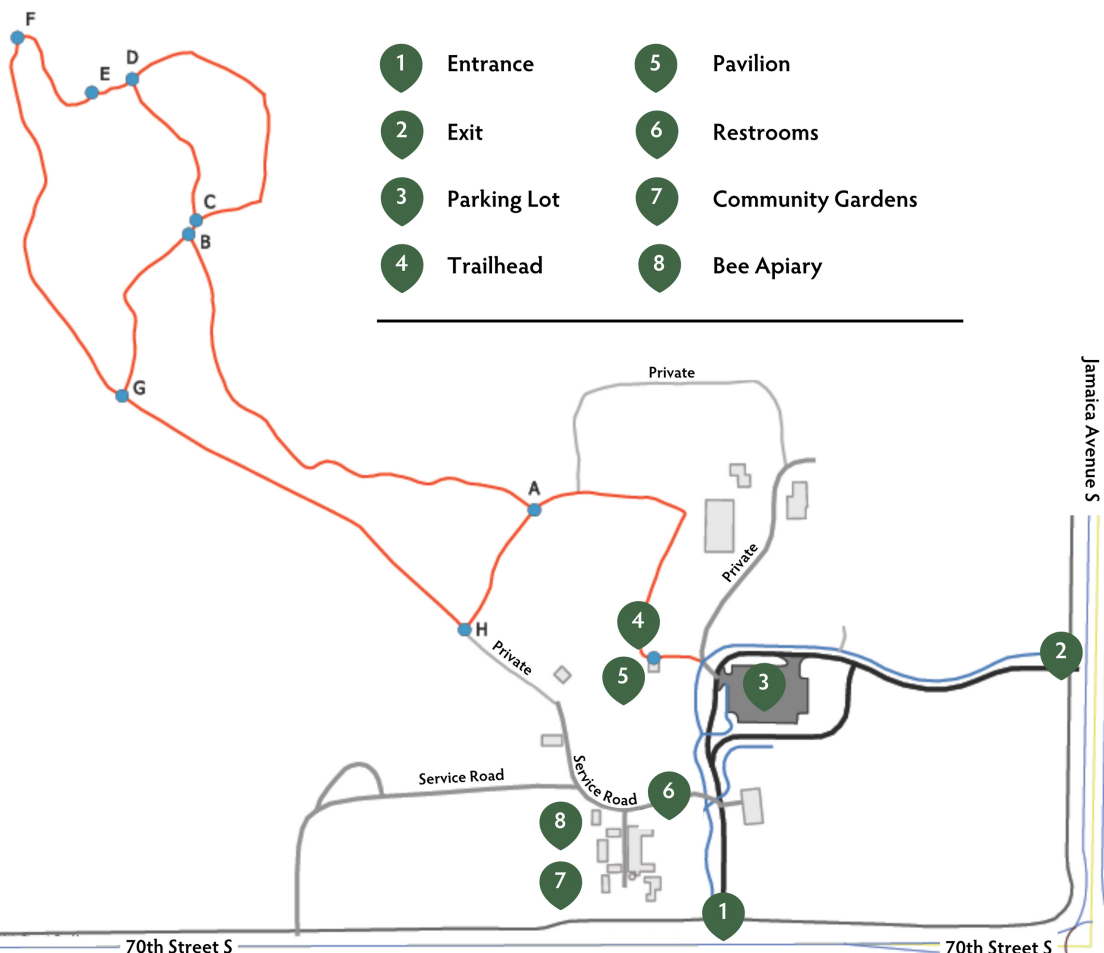
# Shepard Farm

8946 70th Street S, Cottage Grove, MN 55016

## Map Legend

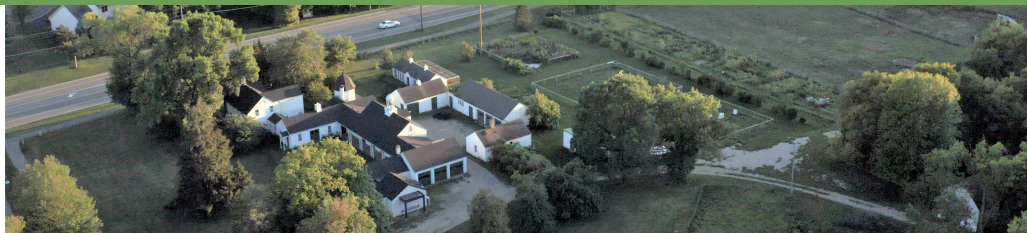
-  Trail – Please hike only on marked trails
-  Gravel Path
-  Paved Path
-  Paved Road
-  A, B, C, D, E, F, G, H Trail Markers

-  1 Entrance
-  2 Exit
-  3 Parking Lot
-  4 Trailhead
-  5 Pavilion
-  6 Restrooms
-  7 Community Gardens
-  8 Bee Apiary



# Welcome to Shepard Farm

your nature destination in Cottage Grove



## Things to Do and Discover

- Hike in every season. Trails are free to enjoy, sunrise to sunset, 365 days a year.
- Learn with naturalists at outdoor programs.
- Bring your binoculars for birding in 100-year-old woods and restored prairie.
- View farm animals in the pastures.

## Know Before You Go

- Please leave your dogs at home and secure your bicycles by the parking lot.
- You are welcome to bring a picnic. Please pack out your recyclables and trash.
- Restrooms open during daytime hours.

Want to pose for photos?

All posed photography, amateur and professional, requires a media permit.

Request your permit: [DodgeNatureCenter.org/media](https://DodgeNatureCenter.org/media)



[DodgeNatureCenter.org/](https://DodgeNatureCenter.org/)  
**Shepard-Farm**

**Connect with Dodge Nature Center**



Dodge Nature Center is a community-funded nonprofit.  
Your support provides environmental and agricultural education for people of all ages.